

# Advertise Your Company Or Product Next Month

Reasonable Rates

Phone Marcus on 07890 385332

Or E-Mail at: [marcus.whittaker@ic24.net](mailto:marcus.whittaker@ic24.net)

Or Send To: 17 Tram Road, Rye Harbour, E.Sussex

All Classified Adverts will be FREE

## RYE GLASS LTD

22A WINCHELSEA ROAD, RYE, E.SUSSEX, TN31 7EL

**GLASS CUT \* SEALED UNITS  
REPLACEMENT P.V.C.U. WINDOWS & DOORS  
MIRRORS \* STAINED GLASS  
FASCIA & GUTTERS**

**TEL: 01797 224400**

**FAX: 01797 227076**

Don't Forget To Visit  
RYE HARBOUR'S  
Very Own Web Site At

<http://www.ryeharbour.org>

Featuring The Rye Harbour Newsletter

# Rye Harbour Newsletter

Issue 3

Rye Harbour Newsletter

30th November 2001

Compiled By & For The Residents



## Editor's Comments

Welcome!

Yes it's that time again, the third issue of your local newsletter. You will notice that this is the Christmas edition, so let me wish you all a very special Christmas and I hope the children have a great time with their new toys.

The next issue will be published on the Mon. 31st December, the copy date will be Fri. 21st December when we shall be looking forward to celebrating the New Year.

Hopefully you will find the quality of the November issue, far superior to previous issue's, this is due to the fact that, with the help of advertising, your local newsletter has now become self-sufficient, something that wasn't expected for another five months. This also means that we print, fold, staple and proof read the newsletter ourselves.

We being, my wife, Karen, Julie Cleary and of course myself.

At this opportunity let me thank all the contributors who made this newsletter possible once again and I hope, I will continue to get your support. I did receive an anonymous letter this month, it is not our policy to print any article which is anonymous, however if you wish not to be named then that is acceptable, just state so on your correspondence,



Young People Up To The  
Age Of 16

Please read all of page 9

thank you.

We have a number of new residence with us this Christmas and I'm sure you'll join me in offering them a warm welcome to our community.

We have added an extra eight pages this month, which I hope will be sufficient for at least another couple of months, I hope you enjoy the newsletter and have a very Happy Christmas.

## Special Features

- Local Events & Meetings
- General
- Comments & Letters
- Youth Page
- Church News
- Mary Stanford
- Family News
- Jumble Sale
- Tide Timetable
- Local Bus Times



## Fund Raising—Jumble Sale

### CHRISTMAS BAZAAR

24/11/01

It was really good to see so much support for the first event which has been held to raise money for the Golden Jubilee.

The event raised a magnificent sum of £294.80.

38 Children have registered for their free Mug and Crown (coin) so far. Where are the rest? It was good to see that 57

people have signed the petition to save the Mobile Library, but more signatures are needed - let's not lose this valuable service.

The petition and register are held at 17 Tram Road, so pop down there and do



your bit.

The Village Hall Management Committee would like to thank all those who donated to and or attended this event.

And finally - don't forget that persons 16 years old or younger on 3rd June 2002 should register to guarantee a free Mug and Crown (coin).

Steve Tollett on behalf of Rye Harbour Village Hall Management

### JUMBLE SALE

**SATURDAY 1st DECEMBER 2001**

**12.00 Midday—2.00pm**

**In Aid Of The Children's Christmas Party  
Bric-Brac - Books - Toys - Raffle - Refreshments**

**Helpers Required**

**Please See Youth Page**

Contact Julie on 229804 Or Pam on 227090



## Rye Harbour Youth Action Group

The committee met on 19<sup>th</sup> Nov and we paid a visit to Camber After School Club. It was a very good visit and the children that came with us had some good fun. Adrian Gaylon was there from Rother District Council doing sports activities with the children, we hope he can come and pay us a visit at our youth club, when we get started.

We are almost ready to apply for funding and have now completed the

application forms, with kind co-operation of the village hall committee, we will hopefully have storage for all the equipment that we hope to get, the committee would like to thank

Mr George Caister, for the kind donation of a P.C, this will be a great success with all the children I am sure.

I will keep you all posted with any more news.

Pam Carroll RHYAG.

## Parish Council Notebook

Most of the agenda at the meeting on the 12th November, concerned the other three Wards of the Parish, there were however two or three items from Rye Harbour.

"HOORAY!" the sign Tram Road is to be renewed by Rother at any time now, after around six months waiting and several follow up letters.

Concern has been expressed that the Car Park litter bins are too small for the present weekly emptying, they are often overflowing. Rother promises to monitor things.

Two letters were received from residents of Lucas Shadwell Way, expressing concern at a possible Skate Board Ramp, on the adjoining open space. The Parish Council, as owners of the field, wishes to emphasise that no approach has been made to them. If and when an approach is made to install a Ramp, local adjoining residents will be consulted for their opinions. This would also include Rother's Planning Officers and Committee, and Rye Harbour Nature Reserve.

Meantime, the Council hopes that the work will start soon on the overall long-term plan for the site, as reported in Octobers Newsletter.

Finally, the Councils Financial estimates will be considered on Monday 26 November, this will cover the period 2002-2003.

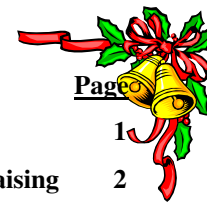
Please remember to take your empty bottles to the bottle banks in the car park, there are bound to be lots at this time of year and sales of recycled glass help towards community charges.

**DON'T FORGET EVERY MONTH  
FREE CLASIFIED**

## Contents

### Item

Item	Page
Editors Comment	1
Jumble Sale -Fund Raising	2
Rye Harbour Youth Group	2
Parish Council Notebook	3
Rye Nature Reserve	4
Harbour Masters Comment	5
Rye Partnership News	6
General Information	6
Bus Times—Christmas Post	7
Classified	7
Christmas in Rye	8
Youth Page	9
Golden Jubilee	9
Fishing News	10
Local Art Report	10
Rye Harbour Lifeboat St	11
Mary Stanford Disaster	12/13
Recipes	16
Walk Down Memory Lane	17
Rye Harbour Church News	20
Luncheon Club	20
Local Interest	21
Parent & Toddler Group	21
Congratulations	22
Hospital	22
Birthdays	23
Advertising	24
Rye Harbour Web Site	24





## Rye Harbour Nature Reserve Report



Now that the warm October weather seems a distant memory, the migrant bird have mostly moved on and been replaced by incoming winter visitors. Two Bittens have been seen regularly at Castle Water, mainly in the evening when they come out of their feeding areas within the reed beds to fly to their roosting site. This is also the best time to watch the Little Egrets arriving at the roost and there is the chance of seeing a Kingfisher or Water Rail. Recent management work at Castle Water has focused on creating channels and removing willows which will take over if left alone, with the aim of improving and increasing the reed bed habitat to encourage birds such as the Bittern, along with other wildlife. We have just started work on converting part of an island in to a reed bed. This will be achieved with the help of volunteers during work parties on the first and third Tuesday of every month. If you wish to help out with this and other tasks over the winter, please come along - we meet in Rye Harbour Car Park at 10am.

Many species of wildfowl and waders are at their highest numbers during the winter. Birds in good numbers this month have included up to 1200 Golden Plovers at Castle Farm, 500 Coots, 450 Oystercatchers, 360 Lapwings and 340 Dunlin on the beach. One of the recent

highlights has been a flurry of Little Auks, mostly along the shore around mid month, with at least five on 14th. The Little Auk is very common on its Arctic breeding grounds but very rare at Rye Harbour, with only a few singles seen before. They arrived after northerly gales in the North Sea pushed them down in to the Channel. Also associated with this influx was a Shag at the river mouth on 16th. Other birds of note have included Marsh Harrier at Castle Water, 5 Avocets on 14th, Short-eared Owl, Yellow-browed Warbler and Snow Bunting.

### **Forthcoming events.....**

The Lime Kiln Cottage Information Centre will be open at weekends and most Wednesdays 10 till 4. We sell a variety of nature reserve gifts, reports, books, etc, so if you're stuck for ideas for Christmas presents why not call in.

**Beach Clean** - Sun 2 December - come along and help us clear the litter off the beach. Meet at Rye Harbour Car Park 10am or come and join us on the beach between then and 1pm.

**Guided Walk** - Sun 9 December - a two mile circular walk around the beach and Temery Pool to look for wintering birds, led by the Warden. Meet at Rye Harbour Car Park at 2 pm. No charge, but donations to the nature reserve welcome.

**Warden: Paul Troake**



## Harbour Master's Comments

" Winter is now upon us and many of the cruiser boats moored in the harbour have been taken ashore for winter lay-up. Work ceases on the Admiralty jetty for the next few months with the contractors returning at the end of February to continue the up grading of this facility.

As further prove that the waters of the harbour and adjacent coastlines are becoming cleaner I am informed that a number of previously unseen visitors have taken up residence. A giant turtle weighing some 20 kilos was caught in a fisherman's net off the harbour. Sadly, she was found to be dead- Being tagged the local fish merchant forwarded details to a Parisian university. "Sammy Seal" is often seen in the middle channel opposite the industrial sites. It has now been in the river for some three months Again, I am further informed that large shoals of Sand Eels have been sited playing under the workmen's lights by the Admiralty Jetty. These were last seen in the harbour over forty years ago.

Ships recently visiting the harbour include Hoo Creek, Hoo Venture, Hoo Beech all owned by T Laphornes" of Rochester, Kent; each carrying some 1350 tons of road-tone for RMC of Robertsbridge. The "Diamonde" (80m LOA) and the "Mitchell" (82m LOA) carried between them 4,100 tons of aggregates from North Wales taking 328 lorries from the Motorways. At the end of October well over 100,000 tons of cargo had been imported into Rye Wharf.

The Rye Fairway Buoy, positioned two miles off Rye and first sited in 1965, has now been taken over by Trinity House, The General Lighthouse Authority for the U.K. This important sea mark (annual running costs - £3,000) used by shipping visiting Rye and transiting the English Channel now has a secure future with the possibility of upgrading at a later date.

It has been announced that the Harbour of Rye, presently owned and operated by the Environment Agency is NOT to be transferred to the British Waters Board as had been feared. Government Ministers have debated this transfer over a number of years but discussions were finally laid to rest with a Press announcement by the Chief Executive of the Agency, Barbara Young, earlier this Month.

Rye is a nominated Fisheries Harbour under the 1951 Sea Fish Industry Act, The controlling body being MAFF (Now 'Department of the Environment Food and Rural Affairs" or DEFRA) has been transferred to the Secretary of State for Transport, Local Government and the Regions (3rd December 2001). This in affect means the harbour is under the authority one ministry as far as funding of harbour operations are concerned and should simplify financial management.

We, at the harbour office continue to manage the shipping and all other activities during the Christmas break ably assisted by Steve Kemp, the pilot to ensure that shipping arrives at Rye Wharf, even on Christmas day.

**Best Wishes and a Happy New Year**

**Carl Baggwell (Harbour Master)**

**DULUX TRADE SELECT REGISTERED  
PAINTER & DECORATOR**

**FOR QUALITY WORK GUARANTEED  
FULLY INSURED  
PAINT EFFECTS**

**RING FRANK PENFOLD  
01797 223548  
07778 251984**





# The Rye Partnership News

## Rye Harbour Village Stores

The purchase of the vacant Rye Harbour Village Store on behalf of the community is proceeding towards exchange of contacts. Hopefully this will be achieved before Christmas.

Refurbishment and fitting out of the building will take place during the early part of the year and the shop is targeted to open for Easter 2002 - here's hoping!

## Rye Harbour Road Business Development

A number of planning applications to develop the derelict industrial site in Rye Harbour Road are receiving objections from the Highways Agency due to the inadequate junction where the road meets the A259. The Rye Partnership has brought together the key players, including industrial site owners, to resolve this issue and have

obtained funds to 'pump prime' a solution. A development brief is being prepared which should be available for consultation in the new year.

A key objective of the Partnership is to ensure that significant environmental improvements (including a footpath) accompany any significant development of workspace accommodation.

Watch this space for information on progress. Mark Evershed

## General Information

### FUN BUS

The Fun Bus will be in Rye Harbour on the following dates:

Tues 4th, December 10.00 am -12.00 pm - Tues 18th, December 10.00 am -12.00 pm

End of Term Christmas Party

## Local Tide Times

DECEMBER		Rye Harbour Approaches	
Date	Time	O.D. metres	O.D. metres
1 Sa	1057	3.6	2320
2 Su	1135	3.7	2358
3 M	—	—	1216
4 Tu	0038	3.6	1257
5 W	0122	3.5	1344
6 Th	0211	3.2	1440
7 F	0311	3.0	1552
8 Sa	0421	2.7	1711
9 Su	0535	2.6	1828
10 M	0651	2.7	1937
11 Tu	0758	3.0	2036
12 W	0854	3.2	2127
13 Th	0945	3.5	2214
14 F	1033	3.6	2257
15 Sa	1116	3.7	2338
16 Su	1158	3.6	—
17 M	0018	3.6	1237
18 Tu	0056	3.6	1314
19 W	0133	3.4	1351
20 Th	0210	3.1	1431
21 F	0248	2.9	1515
22 Sa	0332	2.5	1608
23 Su	0424	2.2	1709
24 M	0526	2.1	1814
25 Tu	0630	2.1	1914
26 W	0730	2.5	2006
27 Th	0821	2.7	2053
28 F	0906	3.0	2137
29 Sa	0952	3.4	2220
30 Su	1037	3.6	2304
31 M	1122	3.7	2348

## Flood Warnings

Floodline  
0845 988 1188

## Local Police

Your Local Police Station No.  
0845 607 0999

## Citizens Advice

Mondays - 10.00am - 12.00pm  
Wednesdays - 2.00pm - 4.00pm  
No Appointment Necessary

## Mobile Library

The Library van will be parked in Rye Harbour Road every fortnight.

December  
3rd & 17th



# Local Bus Times

## Mondays to Saturdays only (excluding Bank Holidays) 325 / 326

Route No.	325	325	325	325	325	325	325	325	325
Day Code									
Notes	A						B		
Freda Gardham School	...	...	...	...	...	...	1520	...	...
Rye (Rail Station) ⇌	0848	0948	1048	1148	1248	1348	1448	1525	1603
Tilling Green	0852	0952	1052	1152	1252	1352	1452	1533	1607
Rye (Rail Station) ⇌ arr.	0856	0956	1056	1156	1256	1356	1456	1535	1611
Rye (Rail Station) ⇌ dep.	0859	0959	1059	1159	1259	1359	1459	...	1614
Rye Harbour	0906	1006	1106	1206	1306	1406	1506	...	1621
Rye (Rail Station) ⇌ arr.	0913	1013	1113	1213	1313	1413	1513	...	1628
Rye (Rail Station) ⇌ dep.	0914	1014	1114	1214	1314	1414	...	...	1629
Rye (Hospital)	0916	1016	1116	1216	1316	1416	...	...	1631
Playden (Peace & Plenty)	0917	1017	1117	1217	1317	1417	...	...	1632
Houghton Green	0919	1019	1119	1219	1319	1419	...	...	1634
Military Road	0921	1021	1121	1221	1321	1421	...	...	1637
Kings Avenue	0924	1024	1124	1224	1324	1424	...	...	1639
Rye (Rail Station) ⇌ arr.	0926	1026	1126	1226	1326	1426	...	...	1644
Rye (Rail Station) ⇌ dep.	0929	1029	1129	1229	1329	1429	...	...	1544 1644
Rye Harbour	0936	1036	1136	1236	1336	1436	...	...	1551 1651
Rye (Rail Station) ⇌	0943	1043	1143	1243	1343	1443	...	...	1558 1658

### Explanation of Codes:

A: Additional journey on Schooldays only at 0830 from Cadborough Cliff to Freda Gardham School  
B: The 1520 journey operates via Cadborough Cliff at 1530  
⊕: Schooldays only

## Mondays to Saturdays only

Service No	344	344	347	344	344	344	344	344	344	344	344	344	345
Operator	CO	SES	J&H	CO	CO	CO	RC	SES	SES	SES	SES	RC	RC
Notes	NS	NS	⊕				NS	S	⊕	S	NS		
Freda Gardham School	...	...	...	...	...	...	...	...	1525	...	...	...	...
Tilling Green (Mason Road)	...	...	...	...	...	...	...	...	1534	...	...	...	...
Rye (Rail Station) ⇌	...	...	...	0909	1046	1256	1450	1450	1536	1550	1650	1655	1750
Rye (Harbour)	...	...	...	...	...	...	...	...	1542	...	...	B	1758
Winchelsea (Bridge End)	...	0755	0755	0916	1053	1303	1457	1457	...	1557	1657	1703	1808
Winchelsea (Beach)	...	0758	0758	0919	1056	1306	1500	1500	...	1600	1700	1706	1811
Winchelsea (Smugglers End)	...	0800	0800	0921	1058	1308	1502	1502	...	1602	1702	1708	1813
Pett Level	...	0803	0805	0925	1102	1312	1506	1506	...	1606	1706	1712	1817
Fairlight Cove (Hotel)	0730	0809	0812	0932	1109	1319	1513	1513	...	1613	1713	1719	1824
Fairlight Glen	0736	0815	0822	0942	1119	1329	1523	1523	...	1623	1723	1729	1834
Ore (Christ Church)	0738	0817	0825	0945	1122	1332	1526	1526	...	1626	1726	1732	1837
Old Town (Boating Lake)	0742	0822	C	0951	1128	1338	1532	1532	...	1632	1732	1738	1843
Hastings (Harold Place)	0746	0824	...	0953	1130	1340	1534	1534	...	1634	1734	1740	1845
Hastings (Rail Station) ⇌	0748	...	...	0955	1132	1342	1536	1536	...	1636	1736	1742	1847
Conquest Hospital (Grounds)	...	...	...	1016A	...	...	...	...	...	...	...	...	...

Service No	345	345	344	344	344	347	344	344	344	344	344	344	344
Operator	SES	SES	CO	CO	CO	J&H	RC	SES	SES	RC	SES	RC	RC
Notes	⊕	NS	H			S	NS	S	NS	NS	S	NS	NS
Conquest Hospital Grounds	...	...	0907A	...	...	...	...	...	...	...	...	...	...
Hastings (Rail Station) ⇌	...	...	0926	1136	1346	...	1546	1546	1636	1740	1745	...	...
Hastings (Breeds Place)	...	...	0930	1140	1350	...	1550	1550	1640	1744	1749	...	...
Hastings (Old Town, Cutter)	...	...	0932	1142	1352	C	1552	1552	1642	1746	1751	...	...
Ore (Christ Church)	0739	0739	0939	1149	1359	1535	1559	1559	1649	1753	1756	...	...
Fairlight Glen	0743	0743	0943	1153	1403	1539	1603	1603	1653	1757	1800	...	...
Fairlight Cove (Hotel)	0753	0753	0953	1203	1413	1549	1613	1613	1703	1807	1809	...	...
Pett Level	0801	0801	1000	1210	1420	1556	1620	1620	1710	1814	1816	...	...
Winchelsea (Smugglers End)	0803	0803	1004	1214	1424	1600	1624	1624	1714	1818	1820	...	...
Winchelsea (Beach)	0805	0805	1006	1216	1426	1602	1626	1626	1716	1820	1821	...	...
Winchelsea (Bridge End)	0813	0813	1008	1218	1428	1608	1628	1628	1718	1823	1823	...	...
Rye (Harbour)	0820	0820	...	...	...	...	...	...	...	...	...	...	...
Rye (Rail Station) ⇌	0827	0827	1016	1226	1436	...	1636	1636	1726	1830	1830	...	...
Tilling Green (Mason Road)	0832	...	...	...	...	...	...	...	...	...	...	...	...
Freda Gardham School	0845	...	...	...	...	...	...	...	...	...	...	...	...

Explanation of Codes: NS: Not Saturdays S: Saturdays Only N+: Not School Days +: School Days Only A: As Local Rider 300 to/from this point  
B: Runs via Thomas Peacock School on schooldays C: Continues to/starts at Guesting School H: Not a Local Rider Service

## Recommended Last Posting Dates For Christmas

First Class 21st December  
Second Class 18th December

## Classified

Have You Any Old Records? For Sale Pine drop side cot,  
If you have any old LP's Two calor Gas Fires  
or Records you don't want Please bring them Please Call on  
to 5 Penstock Terrace 01797 227773

# Christmas in Rye

## Saturday 1st December

The Christmas lights will be switched on outside The George Hotel at 4pm after a small procession from Cinque Ports Street.

Together, Father Christmas, Captain Pugwash and The Mayor will perform the magic ceremony and most shops will be open until 7.30pm. There will be entertainment around the town including children's rides, clowns, free balloons and hot food. Father Christmas will have his magical grotto in The Ypres Tower from 4.30pm to 7.30pm

## Sunday 2nd December

Father Christmas' Grotto will be in the Ypres Tower from 11.am to 1.pm and 2.pm to 4.30.pm

## Saturday 8th December

Most shops will be open until 7.30pm and the town will have a "Smugglers Christmas" theme. "Smugglers and Revenue men" will be around the town from 4pm but shhhhhh don't tell the Red Coats where the "gentlemen" are.

Free Parking in Rother District Council Car Parks

## Saturday 15th December

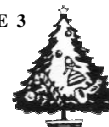
Most shops will be open until 7.30pm and the day will finish with a magnificent firework display at 8pm ( weather permitting).

Free Parking in Rother District Council Car Parks

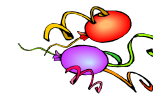
## Saturday 22nd December

Most shops will be open until 7.30pm. This is your last chance to shop late for those really important presents in the relaxed and pleasant atmosphere that is Rye at Christmas.

Free Parking in Rother District Council Car Parks



## Youth Page



### CHILDRENS XMAS PARTY

Rye Harbour Children's Xmas Party will be held on Sunday 16 December at the village hall, to start at 4pm-7pm. All children from the age of 0-11 yrs will be very welcome, older children are welcome to come along and help. There will be an Entertainer at 6pm, and Father Christmas will be coming along with

presents. We will play some party games; Tea will be served at about 5pm. We hope all the children will come along and join in the fun. Mums and Dads, if you could bring along a plate of party food or a Bottle of Drink, all donations would be welcome.

**Please see Page 2 (Jumble)**

### Youth Sports Training

There is an opportunity for youth s under the age of 16, Girls & Boys to participate in a general sports training session being held locally in January & run by the Sports Development Officer (Rother Council), it is entirely FREE & there are a couple of places available. If you are interested please contact:

**Julie on 229001**

## Golden Jubilee

HM QUEEN ELIZABETH II - GOLDEN JUBILEE 3 RD JUNE 2002 The Village Hall

Management Committee are currently raising money to celebrate the Golden Jubilee of HM Queen Elizabeth II.

It is anticipated that all children 16 years old or younger on 3rd June 2002, living permanently in Rye Harbour, will receive a commemorative Mug and Crown (coin) free.

We are hoping to hold some form of fun day on the Coronation Field (also known as the School Green), possibly a sports day for the kids. In the

evening we are hoping to have a B-B-Q and music where the whole community can come together as one.

If you've got a young person living in your house, who will be 16 years old or younger on 3rd June 2002, living permanently in Rye Harbour, then make sure that you register their name in the register which is held at 17 Tram Road; to ensure that their free mug and crown is reserved for them.

Mugs and Crowns (coins) will be available for anyone over 16 on 3rd June 2002 to buy at a cost of £5 each item. A £1

deposit will be required for each mug ordered and the full £5 for each crown.

If you have any ideas for the day and or raising money then let us know. If you would like to volunteer your time to help on the day and or raise money then why not pop a note through the Village Hall letterbox and let us know.

We hope that the Golden Jubilee will be as successful as the Queens Silver Jubilee.

Steve Tollett for and on behalf of Rye Harbour Village Hall Management Committee





## FISHING NEWS



### ROUND THE BAY FOR MORE

Fishing has been very slow in November so far, with a mixture of things all contributing, from the usual different weather patterns, to the French market, which we rely on more and more.

The mild temperature has made it difficult to keep scallops very long and has slowed their roeing up, which brings them into tip-top condition, resulting in, not very much demand and a poor price. Only a couple of smaller boats have started, with the bigger vessels holding back another month.

With the wind going into the N. West round to the N. East and a big set of tides, it has meant local conditions have not been ideal. The wind in this direction sets up a lot of ebb tide and with that, it muddies the water, keeping the cod and whiting higher in the water along with the

smaller fish, which they feed on.

Usually prevailing Westerly winds keep the tides a bit more equal and the flood tide clearing the muddy water, with the result of two of the usual four hauls in a normal trip, are fished in what is thought to be better conditions.

Local boats that fish with set gill nets, have had the same problem, their nets being fished on the bottom and the fish staying higher in the water and keeping just out of reach, even when the tide is at its high water or low water slack. To prove the point, on the day of writing, the wind did back out to the S. West, then fell very fine with the water clearing, to give ideal conditions and one of the best days fishing so far.

So a promising start to the winter fishing, has stalled a bit but as we know, you can't beat the weather. **BOY ASHORE**

### WILLIAM THE CONQUERER

Sat. 1st Dec. Live music with X.L. 8.30 pm to 11.00pm

Sat. 22nd Dec. Live Music with Toucan 8.30pm to 11.00pm

Sun. 23 Dec. Kids Xmas Party By invitation only.

Name list in pub, £2 per child. Age 11 & under

Starts 5.30pm, Entertainer is Uncle Doughnut from 6.00pm

Closing date for name Sun. 16 Dec. 10.30pm

Mon. 31st Dec. New Years Eve - Disco with Raving Russel 8.00pm to 1.00am

Christmas Menu is available from 11th Dec. to 21st Dec. Booking Only

BERNIE, STEPHANIE, JESSICA & ALL THE STAFF would like to wish

Everyone a Happy Xmas & New Year.



## Local Art Report

Nine Days Wonder is now an Arts group and we would be pleased to hear from local artists who would consider producing a piece of sculpture for the next -Art Walk'. We are also planning an exhibition

about the river Rother, in the constantly changing seasons of our lives; the river is a reminder of our connection to the greater expanse of water that leads us to new horizons. If you have any memories to

share about life on and around the Rother, or photographs I could see, please let me know on 227800. Thank you.

Sue Quatermass



## Rye Harbour Lifeboat Report

This month, as usual for November, has been a quiet one as far as Life boating goes. All of the crew have been training on Sundays and Mondays as always. We have been running a Duke of Edinburgh award scheme, Bronze course for eight students from Rye Sea Cadets, Thomas Peacock College and Claverham College, all of whom seem very keen and are enjoying it.

With the Memorial Service for the Crew of the Mary Stanford on the 18th I thought I would pass on a bit of history from an article presented to the Lifeboat Station in 1984 by Mary Owen, editor of The Rye Gazette.

### Who was Mary Stanford?

Mr. John Stanford of Regent's Park died around 1880, leaving money to the Royal National Lifeboat Institution to endow a lifeboat to be named after his mother. This was stationed at Rye to take the place of the former boat stationed near the Camber Coastguard station. This was the first Mary Stanford, she was 34 feet long and rowed ten oars double banked, says "The Lifeboat" reporting the launching ceremony on 8th September 1881. After a procession through Rye Town the Lifeboat was taken to the Strand and launched. A crowd of some

four to five thousand people attended. She launched on service 11 times saving 35 lives and was replaced in due course by "Edward and Lucile". In 1916 the second Mary Stanford Lifeboat took up station at Rye. She was to launch on service 16 times and save 10 lives, before she capsized with the loss of all 17 crew on 15th November 1928. After the disaster the Stanford family wished to give the RNLI a replacement boat. In 1929 Ballycotton on the south coast of Ireland was due a new boat and RNLI officials went over to talk to the crew, to ask if they minded having a boat with the same name, as the one that had only recently been lost at Rye Harbour. Without exception all the crewmen agreed that the name should be carried on. It would, they said, be a tribute to the Rye Harbour Boat and its Crew, who had been defeated only by the elements. In 1930 the third "Mary Stanford" went into service. She was launched 83 times and saved 101 lives. In 1959 she was replaced by the "Ethel Mary", Mary Stanford became a standby boat and was later sold for use as a pilot boat at Shannon.

Richard Tollett

## RYE HIRE

1 CYPRUS PLACE, RYE — Tel. 01797 223033

### New Equipment for Hire

MUCK TRUCK PETROL ENGINED BARROW from £25 + vat

BOMAG PETROL ROLLER from £40 + vat

CAMON PETROL TURF CUTTER from £27.50 + vat

We still hire a wide range of equipment, sell building materials, cycle spares, etc. and repair/service most makes of tools and garden equipment

Member of Hire Association Europe

THE DAILY MIRROR, Friday, November 16, 1928.

HOME SECRETARY AND THE POLICE INQUIRY

**£1,000  
OR  
£2 A WEEK  
FOR LIFE**

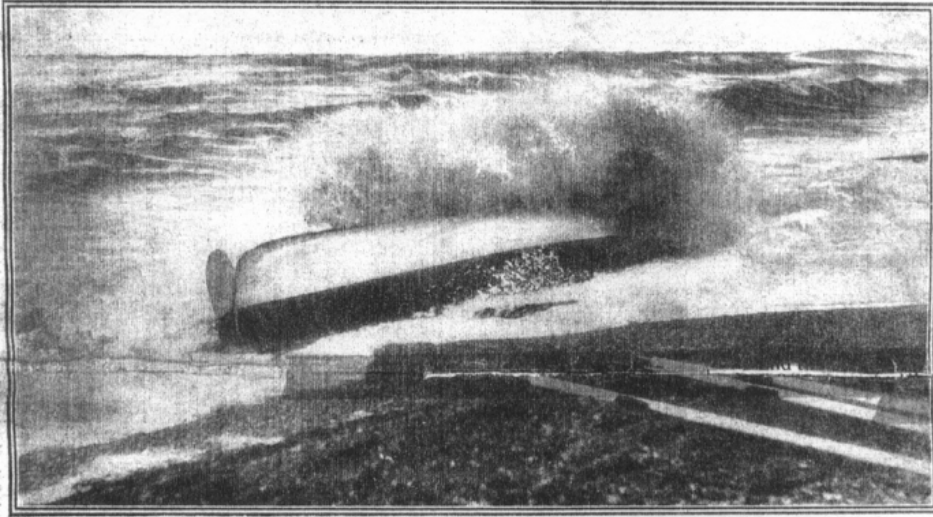
# Daily Mirror

THE DAILY PICTURE PAPER WITH THE LARGEST NET SALE

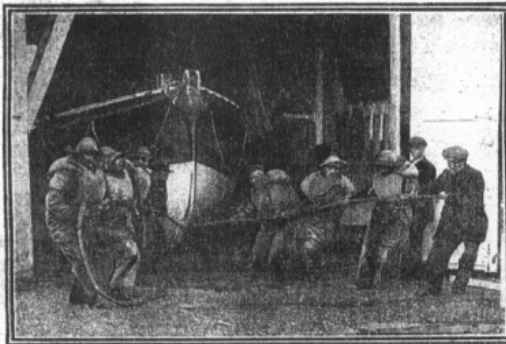
No. 7,803 Registered at the G.P.O. as a Newspaper FRIDAY, NOVEMBER 16, 1928 One Penny

**MORE  
INSURANCE  
CLAIMS  
PAID**

## CREW OF SEVENTEEN DROWNED IN LIFEBOAT DISASTER



The overturned Rye Harbour lifeboat washed up on the foreshore at Jury's Gap, near Rye, Sussex, after it capsized yesterday. Two of the dead were found beneath her.



The crew of the Rye lifeboat launching their craft in response to a call.

In the sight of weeping women the Rye Harbour lifeboat disappeared among mountainous waves when returning from a wreck yesterday. Soon afterwards it was seen floating bottom upwards, and men were discerned struggling in the water. All the crew were



Artificial respiration being attempted on one of the lifeboatmen.

drowned, and the disaster has robbed the little village of Rye Harbour of practically the whole of its fishing population. The lifeboat's aid was unnecessary, for the crew of the sinking vessel had been taken off by a German ship. (See also pages 14, 15 and 28.)

THE DAILY MIRROR, Wednesday, November 21, 1928.

GREAT NEW LOVE STORY BEGINS NEXT MONDAY

**£25,000  
FREE  
INSURANCE**

# Daily Mirror

THE DAILY PICTURE PAPER WITH THE LARGEST NET SALE

No. 7,807 Registered at the G.P.O. as a Newspaper WEDNESDAY, NOVEMBER 21, 1928 One Penny

**32  
PAGES**

## 15 LIFEBOAT HEROES BURIED IN ONE GRAVE



The bodies of fifteen of the crew of seventeen lifeboatmen who were drowned when the Rye Harbour (Sussex) lifeboat capsized after going to the help of a steamer in distress being carried to the one grave in which they were buried together in the village churchyard at Rye Harbour yesterday. The bodies of the other two have not yet been surrendered by the sea. Round the churchyard stand some of the thousands of mourners who attended the quiet ceremony. Below are the deserted boats—with their flags at half-mast—of the little fishing fleet, which the disaster has robbed of practically all its crews. See also pages 16 and 17.—(Daily Mirror.)



## The Pugwash Pantry and Spit Roast Company

for the very best in  
Outside Catering  
contact Dick or Babs on  
tel: 01797 270912  
mobile: 07711 892395

E.mail: dick.cherrytree@virgin.net

## RYE CLEANERS

MARKET ROAD

Tel. 01797 224779

FULLY FINISHED LAUNDRY AND DRY CLEANING  
BAG WASH SERVICE (washing by weight)  
REPAIRS AND ALTERATIONS  
SPECIALIST SUEDE, LEATHER AND WAXED GARMENT CLEANING  
EXPRESS SERVICE AVAILABLE

HARRIS REFRIGERATION

## FRIDGE FREEZER REPAIRS

NO CALL-OUT CHARGE

Rye (01797) 224401 or New Romney 362327  
Mobile 07721-369937

## OVER WEIGHT?

Fed Up Of Dieting Without Success? Then Try Us!

Naturally Derived Products

30 Day Money Back  
Guarantee.



For More Details

**CALL NOW**

On

**01797 225260**

Email on: [Truenature@aol.com](mailto:Truenature@aol.com)

(INDEPENDENT HERBALIFE DISTRIBUTOR)

## RYE HOLISTIC CENTRE

Aromatherapy  
Bach Flower Remedies  
Cranial Sacral Therapy

Homoeopathy  
Indian Head Massage

Iridology

Kinesiology

(Specialising in Allergy Testing)

Reflexology

Treatment of Candida  
Allergy/Intolerance Testing  
a Speciality

Telephone: 01797 223548

Email: [treatments@rye-holistic-centre.co.uk](mailto:treatments@rye-holistic-centre.co.uk)

Web Site: [www.rye-holistic-centre.co.uk](http://www.rye-holistic-centre.co.uk)

LONG ESTABLISHED PROFESSIONAL BEAUTY THERAPY



*Sharon Devold* IHBC NVQ ITEC  
at the



## RYE SANCTUARY DR. HAUSCHKA THERAPY/SPA

Holistic treatments with 100% organic bio-dynamic skincare products  
for men and women

Permanent Make-up - now available

Late summer and pre-holiday feel goods:

Waxing, Manicures, Pedicures, Eyelash tinting/perming, Suncare products

Relax, De-Stress and Heal with

REFLEXOLOGY - INDIAN HEAD MASSAGE - REIKI - HOMOEOPATHY

For BEAUTY INSIDE AND OUT call



Sharon, Kym or Karen  
**01797 224277**



22 Landgate, Rye, Sussex TN31 7LH





## RECIPES



### APPLE DRINK

*Makes good use of  
windfall Apples*

3.5 lb Apples  
1 Gallon (8 pints) Water  
2 Lemons  
2 Oranges  
2.5 lb Sugar

Mince or CmsH Apples,  
Cover with Water,  
Leave 1 week - stir daily.  
Add rind and juice of  
Lemons and Oranges.  
Add Sugar,  
Leave 24 hrs.  
Strain and Bottle.

### NO COOK JAM

1.25 lb Fresh Strawberries/ Raspberries or  
Blackberries  
2 lb Caster Sugar .  
5 bottle Liquid Certo (Pectin)  
2 Tablespoons Lemon Juice  
In a large bowl, cmsH the fruit with a large  
spoon or Potato masher  
Stir in Sugar. Leave in a warm place for 1 hr  
- Stirring occasionally  
Add Certo and Lemon Juice  
Stir continually for 2 mins  
Fill clean dry Jam Jars with mixture  
Cover with foil and leave to stand in a warm  
Kitchen for 48 hrs.

*This Jam will freeze well and will keep for  
1 yr in the Freezer. Once a Jar is opened it  
should be kept in the Fridge.*

### SLOE GIN

1 lb Sloes (ripe and sound)  
6 oz Sugar  
Gin  
Prick Sloes all over with a needle  
Half fill jars with the Sloes  
Sprinkle with Sugar  
Cover with Gin  
Keep tightly covered in a fairly warm place (kitchen)  
for 3 months, shacking jars occasionally  
Strain Liquid  
Bottle and seal tightly.

*This Drink improves if kept longer*



### OLD FASHIONED MINCEMEAT (suitable for Vegetarians)

1.5 lb Cooking Apples -peeled, cored  
and chopped  
1.5 lb Raisins, 7.5 lb Currants or 2.25  
lb Mixed Dried Fruit  
6 oz Butter 7.5 lb Soft Brown Sugar  
2 level Dessertspoons Cinnamon  
2 level Teaspoons Ground Gloves  
2 level Teaspoons Nutmeg  
2 level Teaspoons Mixed Spice .  
25 Pint Cider  
Rind and Juice of 2 lemons  
Brandy or Rum optional - 2 Table-  
spoons  
In a large pan bring Cider to the boil.  
Add all Ingredients.  
Cover and simmer gently for 30-40  
mins, stirring occasionally.  
Cool for a few mins  
Stir in Brandy or Rum if used  
Pack in clean warm Jars  
Cover with Cling Film while still hot.  
Makes approx 6 lb  
*Keep in fridge or somewhere cool*

## A WALK DOWN MEMORY LANE

For the Golden Oldies of Rye Harbour

Let us start at Nook Point (no Western  
Arm) and shrimp nets lying on the beach  
with big stones on them to stop them  
blowing away, "They'll still be there  
when the owners need them."

Turn to the North, up past Limekiln  
Cottage (pony's) over the wooden  
footbridge (where Mackley's bridge is  
now).

Hurry a little because the tide will be up  
to the Martello Tower (no caravan park in  
those days).

Past the Vicarage Comer, round the point  
to the boulder hard, where railway tracks  
are awaiting to be loaded with blue  
boulders from the shore.

The Ferry boat is picking up people on  
the Camber side, some have been  
caddying at the golf course.

A bit thirsty? Have a 'Vantas' in Mrs  
Tunbridge's cafe and shop. Back to  
Vicarage Comer, down Watson's Hill,  
the W.I. ladies are playing Croquet on the  
vicarage lawn. Up the main road past  
'Diggles' shop with Parrot in the window,  
Sit for a while on the Tampkin wall and

look west up Ted's Dyke towards the  
gardens. Past the school green on your  
left and Monkey Island on the right  
(where the Wharf is now), Jempson's  
cows are in the field.

Past the church and steel works, through  
the white gates just past Spun, over  
Stag's Hole Gut (where the pollution is  
now!!!), called Stag's Hole because the  
hunt chased a stag into it!

Up past the chemical works and Johnny  
Carters, dodge all the potholes that are  
full of water in the old shingle road. Cut  
across from the wire fencing to the  
railway crossing missing out the shipyard  
bend, over the sluice, turn right at the  
tollgate, past Gasson's warehouse. The  
model laundry, Gauls garage, the Gas  
works, the Blacksmiths, the Pipes pub,  
through Cinque Ports St to the Railway  
pub, have a pint, a sit, and back to Rye  
Harbour down the railway line, and  
home.

Dan'11 (Harbour Duck)



# CORRALLS

## FOR COAL

**DAILY DELIVERIES \* COMPETITIVE PRICES**

**QUALITY FUEL 25KG PRE-PACKED OR 50KG TIPPED**

**CREDIT CARDS WELCOME \* CASH & CARRY \* SEA CRUISES**

**WINCHELSEA ROAD, RYE**

**01797 223117**



# COUNTRY PINE WAREHOUSE

*40 The Mint, Rye,*

*East Sussex*

*TN31 7EN*

*01797 224572 shop*

*01797 225014 Warehouse*



## NOW OPEN



THE PAPERBACK BOOK TRADER  
PAPER BACK BOOKS  
SOLD, BOUGHT & EXCHANGED

27A CINQUE PORTS STREET, RYE  
TEL: 01797 226786

## CALENDAR CLEANING

**Tel: 01797 - 230736**

**Mobile: 07798 - 674942**

**Commercial & Residential Cleaners**

**OFFICES - SHOPS - WINDOWS - CARPETS - HOUSES**

Throughout Rother & the Wealden Area

**Fully Insured**

**Trained Staff**

**Free Quotations**

## Martyn Channon's COUNTRY STORE

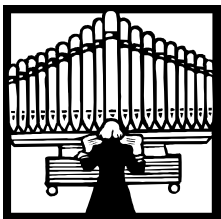
RYE CATTLE MARKET - RYE - EAST SUSSEX

(01797) 224232 Fax (01797) 224560

ANIMAL HEALTH PRODUCTS - FENCING WIRE - GATES  
ANIMAL and PET FOOD - COUNTRY CLOTHING - CARTRIDGES  
SHEARING EQUIPMENT - IRONMONGERY

Open 8.30 - 5.30, Saturday 9.00 - 5.00

Delivery Service



## Rye Harbour Church News

Monthly Parish Eucharist of Christmas.  
Sunday 9th December 9-15

The Eucharist of Christmas. Sunday 25th  
December also at 9-15

During the past 30 years or so.  
Particularly in the western world, the

birth of Jesus Christ in a stable in  
Bethlehem, and the eternal message of  
Peace to all men and women of good will  
have been pushed into the background by  
the incessant pressures and advertising by  
commercial interests.

Rye Harbour Church invites you to join  
them on Christmas morning at 9-15 to  
escape awhile from the hype and to find  
the real peace of Christmas, at the  
Eucharist of Christmas.

**Church Correspondent**

### Monday Luncheon Club

Another "Ploughman's  
Lunch" was held in the  
Village Hall. Some of our  
regulars were ill, but  
nevertheless we still  
enjoyed our get together.

We celebrated Arthur Berry's  
86th birthday and we had a  
lovely piece of Birthday cake,  
made by Arthur, a very rich  
Fruit Cake.



**RYE ALTERNATIVES** offers you Christmas Shopping without the hassle

Aromatherapy Products \* Crystals \* Candles

Would you like to host a Party in your own Home?

(To view the products go to: [www.rye-holistic-centre.co.uk](http://www.rye-holistic-centre.co.uk)  
and click on Rye Alternatives)

Very beautiful gifts at really reasonable prices - give that someone special  
something very different and unusual and make their Christmas  
Ring 01797 223548 - To arrange your Party.



**Ellis Bros.**  
**(Funeral Services)**  
**Ltd.**



THE OLD FIRE STATION, 3 FERRY ROAD, RYE. Tel 01797 222394

**Funerals, Memorial Monuments arranged**

Private Chapel of Rest

Golden Charter Prepaid Funeral Plans

Under the Personal Service of Mr. M. J. Howard at any hour

## Local Interest

Elsie dark has lent us this  
photo taken by her brother  
Bert Hedgler in 1921. We  
can all see what a great  
difference there is in the  
landscape.

Elsie thinks that the picture  
was taken years before the  
shop became a Post  
Office.

Her father Bert Hedgler  
senior, had it built as a  
shop, he later applied to be  
Sub Post Master in 1948.



As you can all see, the  
picture was taken at the  
back of Tram Road, even  
before the little footpath  
was there.

There used to be a duck pond

there and I can remember  
skating on it with my  
Auntie Nell, it stretched  
right up to the allotments,  
where he kept his horse  
and cart, later to become  
a chicken shed.

The duck pond used to  
be a dumping ground, and  
Elsie tells me that her  
husband Norman went  
through it and found  
enough bits and pieces to  
build himself a bicycle.

# 1<sup>st</sup> CLASS DRIVING SCHOOL

**Rye 01797 225870**

**RYE, TENTERDEN AND SURROUNDING AREA**

**Free 1st Lesson and Assessment**

**K. Avery**

**Qualified D.O.T., A.D.I.**

**Vauxhall Corsa**

## Rye Harbour Parent and Toddler Group



Our First Aid course  
started on 22nd Nov, due to  
circumstances beyond our  
control. We were let done  
at the last moment by  
Creche workers, which  
meant that most of our  
mums could not make  
alternative arrangements  
for their Toddlers and  
therefore could not start  
this course.

Our sincere apologies to all

those concerned.  
However, the course went  
ahead and with the  
approval of the First Aid  
tutor, Julie and myself kept  
half the hall open for  
Parent and toddler, whilst  
Parents in the other half  
concentrated on their  
course.

When we meet again at  
P/T I hope we can discuss

how to make courses more  
available to everyone.

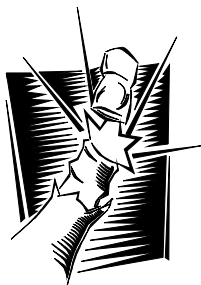
Don't forget our Christmas  
Party on the 19th December  
10.30-12.30.

With Amazing Daisy  
Daffodil: Songs, Puppet  
Show, Balloon Animals and  
a present from Santa's Sac.

**SEE YOU THERE!**

**Karen Whitaker**





## Family Announcements

### Congratulations

Halloween Night, the Village Hall Management Committee redecorated the village hall, and made a lovely job of it. Those of us who aren't much good

On with a paint brush were making tea and coffee in the kitchen. The hall was open house to everyone who dressed up, and Pam had a bowl of apples in water, anyone who could get one out with his or her teeth had a prize. Lots of

people came trick and treating, we had lots of fun. The toilets look especially nice, the colours were chosen by Viv Ennis and the painting done by Patrick,

**Well done.**

We have two more ladies in our Darts Team, and we welcome them, and hope they will enjoy the Darts Nights, both

home and away. One correction to the report in the newsletter issue 2. It is not a cup we won, it is a Shield, Sorry Girls!

MOLLY AND PAT are going to the Christmas Party at "Badgers Gate" on Dec 22nd at 4pm. If anyone would like to come along and join in the singing, please do. We are sure you'll get a cup of tea and a slice of Christmas cake.



**SUZIE PARKINS**  
**FLOWERS**

Usual and Unusual Flowers for every Occasion.  
Extensive Selection of Faux Flowers.  
Plants: we can also supply and maintain Corporate Planters or Arrangements.

**Suzie Parkins**

2 Cinque Ports Street  
Rye  
East Sussex TN31 7AD

Tel/Fax 01797 226379  
[www.rye-tourism.co.uk/florist](http://www.rye-tourism.co.uk/florist)

Deliveries  
Local, National & Worldwide

## Hospital



Lil Cutting is now out of hospital and when I visited her today, she looked better than when Joyce and I went to see her in Rye Memorial Care Centre. She was cooking a Sunday lunch; I thought it was a good sign.

Hopefully we will soon see her out and about again in the village. Ann Chapman has not been too well for some time and as this Newsletter is going to print, she is in hospital. We all hope she will be home soon.

Reports were written By Nanny Pat

## Family Announcements

### BIRTHDAYS



Kris Jackson  
24th December 2001  
Happy 14th birthday  
Love Mum, Dad Rebecca  
and Seb xxxx

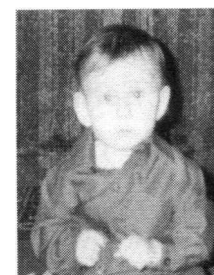


Seb Jackson  
22nd November 2001  
Happy 16th Birthday Love  
Mum, Dad, Rebecca  
and Kris xxx



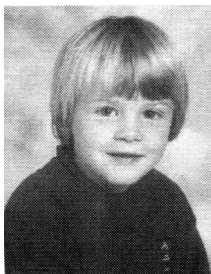
Michelle Tuohy  
Happy 9th  
Birthday, 21st  
Nov, lots of love  
Mum, Dad and  
Christopher xxx

Christopher  
Tuohy Happy 3rd  
Birthday, 1st Dec.  
lots of love  
Mummy, Daddy  
and Michelle xxx



Happy 3rd  
Birthday  
Charlotte, on  
27th December,  
lots of love  
Mummy, Daddy  
and Tammy.xxx

Happy Birthday  
Tammy 8yrs on  
December 24th,  
lots of love  
mummy, Daddy  
and Charlotte.xxx



Alfie Prosser Age  
5, 17th Nov, Had a  
wonderful 'Disco  
Party' at the village  
hall! What a  
smashing venue,  
we will certainly  
do it again!  
Love Kass .xxx

Elseie Haffenden,  
known to us old uns  
as Todd, celebrated  
her 90th Birthday  
on November 26th.  
As a real Harbour  
Duck we all hope  
she has a lovely  
celebration.



We have missed Pat and Ken Fantom at the lunches; Pat has been very poorly but is looking much better. At the moment she is visiting her daughter in Switzerland.

Pat and Ken Rook, have also been missed, we hope that Ken is able to come out and about a bit more, he has not been at all well lately, but hopefully he will improve soon.

Sylvia Alford is beginning to get back to her old self again and hopes to be out and about again in a few days, she thanks people for their good wishes and all the friends who visited her while she was ill.

Nanny Pat