

# Advertise Your Company Or Product Next Month

Reasonable Rates

Phone Marcus on 07890 385332

Or E-Mail at: [marcus.whittaker@ic24.net](mailto:marcus.whittaker@ic24.net)

Or Send To: 17 Tram Road, Rye Harbour, E.Sussex

All Classified Adverts will be FREE

## RYE GLASS LTD

22A WINCHELSEA ROAD, RYE, E.SUSSEX, TN31 7EL

**GLASS CUT \* SEALED UNITS  
REPLACEMENT P.V.C.U. WINDOWS & DOORS  
MIRRORS \* STAINED GLASS  
FASCIA & GUTTERS**

**TEL: 01797 224400**

**FAX: 01797 227076**

Don't Forget To Visit  
RYE HARBOUR'S  
Very Own Web Site At

<http://www.ryeharbour.org>

Featuring The Rye Harbour Newsletter

# Rye Harbour Newsletter

Issue 6

Rye Harbour Newsletter

28th February 2002

Compiled By & For The Residents

## Editor's Comments

Here we are again six months and still going very strong. This month has been a struggle mainly due to the fact that it's such a short month. Welcome back Rye Harbour Sailing Club and hope you will continue to support us.

Steve Clare put his report in this month which I hope will also continue.

The newsletter is just packed with lots of different things going on and at one point I thought it would be necessary to add an extra four pages but I managed to get away with it. Thanks to everyone who contributed once again and many thanks to Jane without whose help last month the newsletter may not have been stapled and folded.

I'm disappointed I had no letters this month after such a flurry in January.

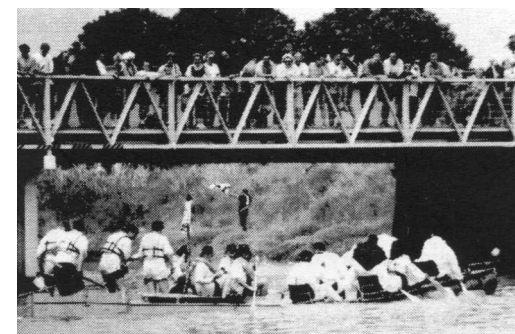
We celebrate Easter early this year, hope you have a good one and the children get lots of eggs.

Copy date for March will be Friday 22nd with publication date being Good Friday 29th although I will hope to deliver by Thursday 28th. Enough from me, I think I've said plenty for February, Happy Easter.

## Note From Your Editor

Are there any adults in Rye Harbour, brave enough to join me in entering this years Raft Race, to get soaked, flour bombed, have a great time and raise some more money for the Harbour.

Ring me on 227773  
IF YOU DARE



## Special Features

- Church News
- Swimming
- Family News
- Jempsons Free Bus
- Tide Timetable
- Local Bus Times
- Public Meeting
- Parent & Toddler
- Local Events & Meetings
- General
- Comments & Letters
- Youth Page

## Fund Raising

### Vanessa's Sponsored Diet

I was hoping to do a new weight ticket from Boots but as the loss this month is negligible I'll leave it until March.

The doctor says where I've been exercising, I've been converting fat into muscle.

I've been doing more exercises, more walking and growing more fruit and veg in my garden so that I get more exercise and I eat more fruit and veg. I feel fitter now than I have for years and I don't miss the sweets.



## JUMBLE SALE

£70.00 was made at the Jumble sale on Saturday, towards this years

Christmas Party for village children, Pam and Julie say helped and those who came and spent. a big thank you to all who

**Julie & Pam**

## INKERMAN ARMS

As a contribution towards the Jubilee fund raising a "Silly Card night" and raffle, Monday 4 March 7-11 Inkerman Arms. We thank Dawn and Peter who extend an invitation to everyone. Their selection of real ales are well worth trying CAMRA listed.

On the 04/03/02, the Inkerman Arms Pub, support them. is holding a Silly Card Games night, in Steve Tollett Rye Harbour Village Hall aid of the Golden Jubilee celebrations. Management Committee We hope that everyone will come and

## Quiz Night

What a night! It was really good to see so many people taking part. and also the New Teams. This month there were 9 teams: The Finn, Bingo Babes, PHD's. Herrings Heads, Flag Staff. Pam's People. FN.I.S.T.I.Ts and Bonko. The winners were the PHD's who scored 80

followed by Pam's People who came a close 2nd with 79 points. The evening was a great success, with everyone enjoying themselves. If you would like to come and join in. then next Quiz Nite is on Good Friday 29/03/02. It costs £ 1 per person and a maximum of 6 players per team.

If you would like to see what teams took part and their scores for last month. then visit the Village Hall web site at: [www.ryeharbourvillagehall.co.uk](http://www.ryeharbourvillagehall.co.uk) then click on Quiz Nite Results Steve Tollett Rye Harbour Village Hall Management Committee

## Parish Council Notebook

The parish councils meeting on Tue 11th February had two or three items of interest to us here in Rye Harbour.

The first, the resignation due to ill health of our Vivien Ennis. The resignation was received with regret as Vivien has contributed a great deal towards Rye Harbour and the parish council in general. A letter expressing the council's regret and best wishes for her future health has been sent.

I am sure we all join in with those sentiments and wish Vivien well.

A letter from the Village Hall was received informing the council of the new fire alarms. which safety regulations required to be fitted and also the new toilet windows and requesting a 33% contribution towards the costs, if at all possible, a contribution from the council would be added to by Rother Council. The whole program being co-ordinated by Sussex Rural Community Council.

Possible funding has been identified and will be discussed at the March meeting.

A reminder has been sent to Rye Partners enquiring about progress on a ground plan for play and recreation; this follows a meeting several weeks ago discussing an initial layout plan.

Finally the Pett Frontage sea defence application will be discussed on Monday 25th February.

## Contents

<u>Item</u>	<u>Page</u>
Editors Comment	1
Fund Raising	2
Quiz Nite	2
Parish Council Notebook	3
Rye Nature Reserve	4
Harbour Masters Comment	5
Village Hall Hire	6
General Information	6
Local Bus Times	7
Jempsons Free Bus	8
Public Notice / Meeting	8
Jobs	8
Youth Page / Swimming	9
Golden Jubilee	9
Fishing News	10
Rye Harbour Youth Group	10
Getting Crafty	10
Rye Harbour Lifeboat St	11
OC & LSW Residents Ass.	12
Walk Down Memory Lane	13
Rye & District Comm. Tran	17
Rye Harbour Church News	20
Luncheon Club	20
Rye Harbour Sailing Club	21
Parent & Toddler Group	21
Animate Parent & Child	21
Congratulations	22
Get Well	22
Birthdays	23
Advertising	24
Rye Harbour Web Site	24

## MISSING

Missing from the Village Hall are three table cloths, green check in colour. An early return will be appreciated as they are in regular use.

Thank you

**DON'T FORGET EVERY MONTH  
FREE CLASIFIED**



## Rye Harbour Nature Reserve Report



Although there are wintry showers blowing over as I type this, the birds are already gearing up for spring. Many birds have been in song for some time now such as Skylarks, Robins, Blackbirds, Song thrushes and Dunnocks. On the beach reserve the Ringed Plovers and Oystercatchers are back on their breeding territories and engaging in courtship display flights on finer days. The Cormorants at Castle Water are our earliest nesters and some are probably already incubating eggs, while others are rebuilding old nests.

Numbers of Coots and ducks there have diminished considerably as birds head off on the start of their journey back to their breeding grounds further north. Common Gulls however have increased in number as birds move up from the continent. A few thousand can be seen arriving to roost along the beach at dusk and the numbers are likely to increase in to March. A few Mediterranean Gulls have also been seen in amongst them. The first Red Admiral and Small Tortoiseshell butterflies have emerged from hibernation.

On 1st Feb many oiled Guillemots were coming ashore. Twelve were picked up between the river mouth and Winchelsea Beach and taken to the RSPCA at Fairlight where a total of 200 were taken

in. The culprit was a wreck off Hastings that was losing oil, but fortunately few oiled birds were found thereafter. Few unusual visitors have been noted. A Dartford Warbler was by the Long Pit on 22 January. A few Chiffchaffs seen in recent days may be early migrants arriving, but one of the Siberian race in the wood (13 Feb) was notable. Firecrest has also been noted on two occasions. At Castle Water up to 16 Smew have been seen, plus two Bitterns and up to 26 Little Egrets at the roost. A Red-necked Grebe was sighted offshore.

Forthcoming events - open to all. No charge, but donations towards the nature reserve welcomed.....

Sun 10 Mar - guided walk around Castle Water Nature Reserve and a chance to look around Camber Castle. Meet at Brede Lock car park at 10am. Return about 1pm.

Sat 16 Mar - The Pannell Valley Nature Reserve - an illustrated talk by John Willsher, 7.30 pm at Winchelsea Beach Community Hall.

Sat 16 and Sun 17 Mar - Annual Beach Clean. Please come and help us to clear the rubbish blown up on to the beach. We may also see the first summer migrant birds. Meet at 10am in Rye Harbour car park.

**Warden Paul Troake**



## Harbour Master's Comments

The winter gales continue without any sign of let up. Ships struggle to make passage's from loading pans to Rye during the brief "windows" between storms. The vessel "Hoofort", owned by Laphorns of Rochester, beat a passage from Port Barrier (France) to Rye at the end of January carrying 1100 tons of road-stone for Rye Wharf. A brief lull in the gales permitted the pilot to board and as the vessel turned to enter to port she was cast ashore onto Camber sands by a particularly heavy swell. There she remained until being floated off the following morning and escorted into Rye by two fishing vessels.

You may have noticed that the harbour launch "Rother III" has been missing for some time. She had been taken to the boatyard for annual maintenance last year when it was discovered that a serious oil leak had the potential to cause pollution. She was immediately "Grounded" until either repairs or replacement engine could be arranged. The decision was taken to re-engine the vessel and a larger, more powerful "Lister" engine has been ordered. The engine is to be fitted during the last week of February and, following successful trials, the vessel will re-enter service at the beginning of March.

Work has resumed on the refurbishment of the Admiralty Jetty. Because of rising costs it is planned to complete only half of the staging, the remaining northern end being taken out of use. Work is progressing quite quickly and six further berths will be ready for new tenants by the end of March.

The Rye Fairway Buoy has drifted some 8 cables to the NE and a Notice to Mariners duly issued giving warning to those at sea at this time. The responsibility for the buoy is to be transferred to Trinity House, The General Lighthouse Authority, as from the beginning of March when it is planned that a new and larger buoy will be positioned at the charted location. This will be completed by one of the larger of Trinity House's buoy handling vessels.

Whilst attending the harbour office over the Christmas period I calculated a number of statistics, concerning commercial shipping, during the year 2001. 98 vessels used the port importing 27,045 tons of aggregates. The largest vessel was the "Michel" at 82 metres LOA. Six other vessels were handled with lengths exceeding 75 metres. The accumulated length of all these vessels totalled 6,054 metres or 301 cricket pitches! Two of these vessels had their berthing aborted due to dense fog.

Finally the Multiple Sclerosis vessel "Multiple Challenge" carrying up to 12 persons suffering from this deleterious disease, is due to arrive at Rye on the 27- May.

**Carl Baggwell (Harbour Master)**

## LEISURE TRAVEL

### PRIVATE HIRE

Air Conditioned People Carrier for  
**AIRPORT - SEAPORT - THEATRE - WEDDINGS**  
**HOTELS - RESTAURANTS - BUSINESS CONTRACTS**  
**CHRISTMAS OUTINGS, etc.**

**TELEPHONE : 07773 922890 (RYE)**

## Hire The Village Hall

If you would like to book the Village Hall for a party or some other gathering then visit the web site at: [www.ryeharbourvillagehall.co.uk](http://www.ryeharbourvillagehall.co.uk) You will be able to view hall availability and other information relating to the Village Hall.

The hall can be hired for £3.50 per hour for Village residents and £5 per hour for non-Village residents, commercial bookings and organisations.

If you don't have access to the internet and would like to book the hall, you can phone 01 797 223631.

Don't forget, a deposit is needed to guarantee your booking.

## General Information

### FUN BUS



The Fun Bus will be in Rye Harbour on the following dates:  
Tues 12th, March 10.00 am -12.00 pm - Tues 26th, March  
10.00 am -12.00 pm

### Local Tide Times

#### MARCH Rye Harbour Approaches

Add 1 hour for B.S.T. from 31st March

Date		O.D. Time	O.D. metres	O.D. Time	O.D. metres
1 F		0012	4.3	1233	4.0
2 Sa		0052	4.4	1312	4.0
3 Su		0133	4.3	1353	3.7
4 M		0214	4.0	1436	3.4
5 Tu		0259	3.5	1525	3.0
6 W		0350	3.0	1622	2.5
7 Th		0450	2.5	1731	2.0
8 F		0608	2.0	1857	1.9
9 Sa		0759	2.0	2028	2.0
10 Su		0918	2.2	2130	2.5
11 M		1008	2.6	2215	3.0
12 Tu		1046	3.0	2254	3.2
13 W		1119	3.1	2328	3.4
14 Th		1146	3.2	—	—
15 F		0000	3.5	1214	3.2
16 Sa		0026	3.5	1239	3.2
17 Su		0048	3.4	1300	3.2
18 M		0109	3.4	1319	3.2
19 Tu		0132	3.4	1346	3.2
20 W		0203	3.2	1420	3.0
21 Th		0241	3.0	1503	2.6
22 F		0331	2.5	1604	2.0
23 Sa		0453	2.0	1811	1.9
24 Su		0657	2.0	1938	2.1
25 M		0813	2.5	2043	2.6
26 Tu		0913	3.0	2137	3.2
27 W		1004	3.5	2225	3.7
28 Th		1051	3.9	2310	4.1
29 F		1135	4.0	2353	4.4
30 Sa		—	—	1215	4.1
31 Su		0033	4.4	1253	4.0

Reproduced from Admiralty tide tables by permission of the controller of Her Majesty's Stationery Office & The UK Hydrographic Office.  
Also my thanks to Adams Ltd for the use of Tide Tables

### Local Police

Your Local Police  
Station No.  
0845 607 0999



### Flood Warnings

Floodline  
0845 988 1188

### Citizens Advice

Mondays - 10.00am - 12.00pm

Tuesdays - 10.00am - 12.00pm

Wednesdays - 2.00pm - 4.00pm

No Appointment Necessary

Rye Partnership Office (Rye)

Or you may telephone, Weekdays between  
2.00pm - 4.00pm on 01424 430400

### Mobile Library

The Library van will be parked in Rye  
Harbour Road every fortnight.

March

Monday 11th & 25th



## Local Bus Times

### Mondays to Saturdays only (excluding Bank Holidays) 325 / 326

Route No.	325	325	325	325	325	325	325	325	325	325	325
Day Code	325	325	325	325	325	325	325	325	325	325	325
Notes	A								B		
Freda Gardham School	...	...	...	...	...	...	...	...	1520	...	...
Rye (Rail Station) ⇌	0848	0948	1048	1148	1248	1348	1448	1525	...	1603	...
Tilling Green	0852	0952	1052	1152	1252	1352	1452	1533	...	1607	...
Rye (Rail Station) ⇌ arr.	0856	0956	1056	1156	1256	1356	1456	1535	...	1611	...
Rye (Rail Station) ⇌ dep.	0859	0959	1059	1159	1259	1359	1459	...	...	1614	...
Rye Harbour	0906	1006	1106	1206	1306	1406	1506	...	...	1621	...
Rye (Rail Station) ⇌ arr.	0913	1013	1113	1213	1313	1413	1513	...	...	1628	...
Rye (Rail Station) ⇌ dep.	0914	1014	1114	1214	1314	1414	...	...	...	1629	...
Rye (Hospital)	0916	1016	1116	1216	1316	1416	...	...	...	1631	...
Playden (Peace & Plenty)	0917	1017	1117	1217	1317	1417	...	...	...	1632	...
Houghton Green	0919	1019	1119	1219	1319	1419	...	...	...	1634	...
Military Road	0921	1021	1121	1221	1321	1421	...	...	...	1637	...
Kings Avenue	0924	1024	1124	1224	1324	1424	...	...	...	1639	...
Rye (Rail Station) ⇌ arr.	0926	1026	1126	1226	1326	1426	...	...	...	1644	...
Rye (Rail Station) ⇌ dep.	0929	1029	1129	1229	1329	1429	...	...	...	1544	1644
Rye Harbour	0936	1036	1136	1236	1336	1436	...	...	...	1551	1651
Rye (Rail Station) ⇌	0943	1043	1143	1243	1343	1443	...	...	...	1558	1658

#### Explanation of Codes:

A: Additional journey on Schooldays only at 0830 from Cadborough Cliff to Freda Gardham School  
B: The 1520 journey operates via Cadborough Cliff at 1530  
⊕: Schooldays only

### Mondays to Saturdays only

Service No	344	344	347	344	344	344	344	344	325	344	344	344	345
Operator	CO	SES	J&H	CO	CO	CO	RC	SES	SES	SES	SES	RC	RC
Notes	NS	NS	⊕				NS	S	⊕		S	NS	
Freda Gardham School	...	...	...	...	...	...	...	...	1525	...	...	...	...
Tilling Green (Mason Road)	...	...	...	...	...	...	...	...	1534	...	...	...	...
Rye (Rail Station) ⇌	...	...	...	0909	1046	1256	1450	1450	1536	1550	1650	1655	1750
Rye (Harbour)	...	...	...	...	...	...	...	...	1542	...	...	B	1758
Winchelsea (Bridge End)	...	0755	0755	0916	1053	1303	1457	1457	...	1557	1657	1703	1808
Winchelsea (Beach)	...	0758	0758	0919	1056	1306	1500	1500	...	1600	1700	1706	1811
Winchelsea (Smugglers End)	...	0800	0800	0921	1058	1308	1502	1502	...	1602	1702	1708	1813
Pett Level	...	0803	0805	0925	1102	1312	1506	1506	...	1606	1706	1712	1817
Fairlight Cove (Hotel)	0730	0809	0812	0932	1109	1319	1513	1513	...	1613	1713	1719	1824
Fairlight Glen	0736	0815	0822	0942	1119	1329	1523	1523	...	1623	1723	1729	1834
Ore (Christ Church)	0738	0817	0825	0945	1122	1332	1526	1526	...	1626	1726	1732	1837
Old Town (Boating Lake)	0742	0822	C	0951	1128	1338	1532	1532	...	...	1732	1738	1843
Hastings (Harold Place)	0746	0824	...	0953	1130	1340	1534	1534	...	...	1734	1740	1845
Hastings (Rail Station) ⇌	0748	...	...	0955	1132	1342	1536	1536	...	...	1736	1742	1847
Conquest Hospital (Grounds)	...	...	...	1016A	...	...	...	...	...	...	...	...	...

Service No	345	345	344	344	347	344	344	344	344	344	344	344	344
Operator	SES	SES	CO	CO	CO	J&H	RC	SES	SES	RC	SES	RC	RC
Notes	⊕	N⊕ H				⊕	NS	S	NS	S	S	NS	
Conquest Hospital Grounds	...	...	0907A	...	...	...	...	...	...	...	...	...	...
Hastings (Rail Station) ⇌	...	...	0926	1136	1346	...	1546	1546	1636	1740	1745	...	...
Hastings (Breeds Place)	...	...	0930	1140	1350	...	1550	1550	1640	1744	1749	...	...
Hastings (Old Town, Cutter)	...	...	0932	1142	1352	C	1552	1552	1642	1746	1751	...	...
Ore (Christ Church)	0739	0739	0939	1149	1359	1535	1559	1559	1649	1753	1756	...	...
Fairlight Glen	0743	0743	0943	1153	1403	1539	1603	1603	1653	1757	1800	...	...
Fairlight Cove (Hotel)	0753	0753	0953	1203	1413	1549	1613	1613	1703	1807	1809	...	...
Pett Level	0801	0801	1000	1210	1420	1556	1620	1620	1710	1814	1816	...	...
Winchelsea (Smugglers End)	0803	0803	1004	1214	1424	1600	1624	1624	1714	1818	1820	...	...
Winchelsea (Beach)	0805	0805	1006	1216	1426	1602	1626	1626	1716	1820	1821	...	...
Winchelsea (Bridge End)	0813	0813	1008	1218	1428	1605	1628	1628	1718	1823	1823	...	...
Rye (Harbour)	0820	0820	...	...	...	...	...	...	...	...	...	...	...
Rye (Rail Station) ⇌	0827	0827	1016	1226	1436	...	1636	1636	1726	1830	1830	...	...
Tilling Green (Mason Road)	0832	...	...	...	...	...	...	...	...	...	...	...	...
Freda Gardham School	0845	...	...	...	...	...	...	...	...	...	...	...	...

Explanation of Codes: NS: Not Saturdays S: Saturdays Only N+: Not School Days +: School Days Only A: As Local Rider 300 to/from this point  
B: Runs via Thomas Peacock School on schooldays C: Continues to/starts at Guesting School H: Not a Local Rider Service

**Jempsons'**  
SUPERSTORE

## FREE BUS SERVICE.

'HAIL & RIDE' SERVICE.

No need to walk miles to the bus stop. **Jempsons bus** will stop anywhere it is safe to do so if you live between stops and are outside your house at the appropriate time just put up your hand when you see the bus coming and you will be picked up.

We recommend that users of the free bus arrive at the bus stops five minutes before departure times.

SERVICES OPERATED BY  
**JEMPSONS of PEASMARSH**

**Telephone (Main Office)**

**01797 230 214 & 218**

New Superstore – Bakery – Post Office –

Pond Cottage Restaurant and

Petrol Filling Station.

[www.jempsons.com](http://www.jempsons.com)

### Fridays

Winchelsea – icklesham – Guestling – Pett –  
Ore – Fairlight – Rye – Peasmarsch

Winchelsea Town (A259 junction)	9.00 depart
Icklesham. All stops	9.04 depart
Guestling, Forge	9.08 depart
School	9.11 depart
Winchelsea St Ore	9.15 depart
Pett, Allards	9.20 depart
Chick Hill Bottom	9.28 depart
Fairlight, Turning circle	9.33 depart
Murco Garage	9.35 depart
Smugglers	9.40 depart
Rye Bay Caravan Park	9.45 depart
Winchelsea, Strand Garage	9.50 depart
Rye Harbour	9.55 depart
Rye, Tilling Green	10.00 depart
Rail Station	10.03 depart
Shaftsbury Housing Company	10.07 depart
Peasmarsch, The Maltings	10.12 depart
Jempsons	10.15 arrive

Depart Jempsons at 11.45 to arrive back at 13.15

### Saturday Express

Frenchmans Beach, Rye Harbour	10.00 depart
Rye, Tilling Green	10.15 depart
Railway Station	10.20 depart
Top 'o' the Hill	10.25 depart
Peasmarsch, The Maltings	10.40 depart
Jempsons	10.45 arrive

Depart Jempsons at 11.45



## LETTERS



To the writer of last months letter directed to Rye Partnership, the official reply is below.

### The Rye Partnership News

After speaking to Neil East who then spoke to Mark Evershed (Secretary) "We have no comment at present and we do not respond to letters to newspapers."

## PUBLIC NOTICE

Would "County Card" bus pass holders please note the expiry date of their present card and call into Rother Homes Rye office, a week or so before the present card expires, letters are no longer being sent to holders reminding of renewals. Do bare this in mind please and renew in good time.

### PUBLIC MEETING

To Form Committee To Run &  
Organise The Jubilee  
Celebrations For The Village.  
All Are Invited No Age Barriers  
Volunteers & Ideas

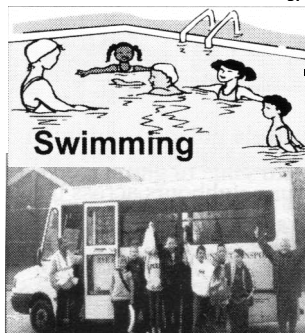
At

The Village Hall  
Thursday March 21st  
7.30 pm - 7.45 pm Start

## JOBS

Trained Childcare workers at level 2 and 3 are needed to join bank staff, for occasional work in creche settings and holiday play schemes in Rye, Rye Harbour, Hastings and Camber.

Please apply to Gina Sanderson, Rye cvs,  
25 Cinaue oorts street. Rye. TN31 7AD.



Swimming

Every Saturday a group of children from the village go to Tenterden swimming pool, Karen and Marcus supervise it. I think I can speak for everyone that it is an enjoyable time.

The first time, we went in the morning but we decided to go a bit later the next week so that we could go on the inflatable and it was good fun, There are also floats and the flume to go on.

Everyone has a really good time and all for just £ 2.50p.

I really hope it carries on.

By Becca Cleary

## Youth Page

# Animate

Landgate, Rye  
01797 225006

## After-Schools Club

11- 14 Year Olds

Monday - Friday

3.30pm - 5.30pm

Free Admission

*Playstation 1 & 11. Internet Access.*

*Tuck. Pool. Table Tennis.*

*PC Games. Music.*

*Board Games. & More.*

Monday - Fun With Food

Tuesday - Video & Popcorn

Wednesday - Crafts

Thursday - Animate Football  
Team

Friday - Open Evening

**COME AND VISIT US SOON**

### Marcus's Comment

I would like to thank the children who have participated so far in swimming and I'm pleased to hear your enjoying it. Your behaviour is a credit to Rye Harbour, keep up the good work and hopefully see you at the weekend. If anyone else between the ages 11 & 16 would like to join us, then call me now on 227773.

Marcus

## Golden Jubilee

Golden Jubilee Don't forget if you would like a Crown and or Mug they are still available. If you want a crown, then I will need your order before the end of March 2002 as these have to be ordered.

For terms & conditions then visit the Village Hall web site at:

[www.ryeharbourvillagehall.co.uk](http://www.ryeharbourvillagehall.co.uk) then click on the Terms & Conditions link.

Steve Tollett Rye Harbour Village Hall Management Committee





## FISHING NEWS



### ROUND THE BAY FOR MORE

The weather has been the big event of February with fishermen talking of how this is more common pattern from the past with gale force winds coming in from the West with low pressures queuing up across the Atlantic to sweep through one after another. The fleet has managed only a handful of trips so far with the scallopers still finding fair fishing with better prices being a bonus.

With the bay left alone and a good breeze to stir things up, a few trawlers had a couple of very good trips,

plaice being the bulk of the catch with small amounts of many other fish making up the mixed bag. Traditionally February and March time is when the plaice come into the bay, this run of fish seems to be quite good with a fair percentage of medium and large fish, something which is not always the case. Prices for fish were not as high as was hoped with local sales okay owing to lack of supplies but fish for export were cheap with modern French, Belgium and Dutch boats able to push on through all but the worst weather and keep fish coming onto the markets.

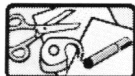
Media reports would have you believe there is hardly a fish left in the sea but fishermen talking to other fishermen from different parts of the country and our neighbours across the water know this is not quite true. Some bigger boats have had to change fishing grounds and leave very good catches because of the quota system which now regulates the fishing. So its not all bad news and here's hoping that some of the fish that seems to be there will find its way into our little corner and the boats can catch a share before it goes on its way.

**BOY ASHORE**

### Rye Harbour Youth Action Group

#### EASTER WORKSHOP

Children From 5-11 and Parents Welcome - Come and join in the fun on 27th March at our craft session in the Village Hall between 10.30am & 12.30pm Clay Modelling, Glass Painting, Cake Baking and much more.



### GETTING CRAFTY



Hello everyone.

Getting crafty has just started down at the village hall; we had a second meeting on Thurs 21 Feb. and will meet again on Thurs 7th March.

Greta Willett paid us a visit on Thurs 21st and the majority of us made some lovely Flower arrangements.

On the 7th March we shall be making Greetings cards for Mothers day, Easter or whatever takes your fancy. There will be a cup of tea and a biscuit and a raffle every fortnight for those who come along. There will also be a fee of £1.00 towards payment of the hall and equipment.

**Julie Cleary**



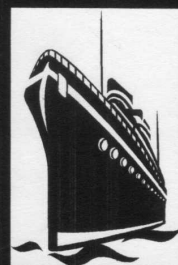
## Rye Harbour Lifeboat Report

As we came to the end of January we had our second shout of the year. On the night of Monday the 28th of January the 'HOOFORT' ran aground as the Master was preparing to enter the Harbour. After trying for about one and a half hours to get back off the skipper decided that he was hard aground and had to wait for the following tide, on the 29th at 11.15hrs. At around 09.00hrs Dover Coastguard informed me that Dungeness Lifeboat was standing by the casualty with the intention to give a tow to the casualty who would be using his own engines as well. Rye Harbour Lifeboat was asked to assist. Not with the towing, I hasten to add but to assist with the passing of towlines and personnel etc. The Hoofort was re floated at 10.15hrs and was

escorted into harbour by the Fishing boat 'MAVRICK' just to be on the safe side. About five years ago I made a request to the Environment Agency to repair and use an existing hardcore roadway for Lifeboat access to the shore. We have finally been granted permission and the work is going on right now. I am pleased to say that for those of you who have encountered the Lifeboat and Tractor on the shore road in the past, with luck, it won't happen again. I think I should point out that it was not the EA that caused all of the delay in getting this work started.

Finally we are looking for some new recruits. See the flyer enclosed.

**Richard Tollett**



## The Fish Shop

*Licensed Restaurant and Take Away*

*Coffee - Lunch— Tea— Dinner*

*Special events welcome*

*Children's parties a speciality*

**11.30—8.30 Everyday**

**37, The Mint, Rye,**

**Tel 01797 223268**

  
Good food and service  
seven days a week

## OYSTER CREEK & LUCAS SHADWELL WAY - RESIDENTS ASSOCIATION

Let me start by thanking the editor for finally asking me to report to the readers of the Rye harbour news letter.

As the residents of LSW & Oyster Creek will know, We set up the residents assoc because the feeling in LSW & Oyster Creek was that we didn't feel part of the "community", we were being over looked in any plans for the harbour and more importantly any plans for LSW & Oyster Creek. Like someone said in the last news letter you hear "rumours" etc, Like people raising money for a skateboard ramp on the green in LSW & Oyster Creek, No one came round to ask us what we would like there!!! (by the way what has happened to the money raised for the ramp? We have been told by the parish council that any fund raising should only start after you have planning permission, otherwise you are gaining money under false pretences) Many people in LSW & Oyster Creek have lived in the harbour for years, since they were kids, but now even they don't feel part of the community.

Rye harbour covers a lot of homes, we feel that you need two or three residents assoc to get an overall view of what everyone wants. There doesn't need to be a "them and us" situation. WE ALL WANT THE SAME THING, we all want to keep Rye harbour as a great place to live, We CAN all work together but the back stabbing , the rumours, and the "them and us" situations have to stop. Yes we all need to be more open and honest and not be afraid to say what we believe, but that means not hiding behind the "NAME AND ADDRESS SUPPLIED" option.

Also can someone confirm that ALL children of the harbour get a free cup & coin for the golden jubilee? Finally, Thanks for everyone for your support at all the meetings and for your support in the bonus ball game, well done to all the winners and keep a look out for up and coming events.

**Steve Clare (chairman Lucas Shadwell way & Oyster Creek res assoc)**

## EDITORS REPLY

First of all, I would like to point out the above report has been taken directly from the e.mail and has not been edited in any way.

But once again I thank Steve for this report and hope it will help straighten out any misunderstandings there might have been in the past.

As far as finally asking for a report, the newsletter when formed, the initial flyer did in fact ask for reports from all clubs, associations, residents and was circulated

to every house in Rye Harbour. In every issue since I have always asked for more. As for being overlooked for plans for Rye Harbour I know for a fact that is not true as Steve Toilet and myself can verify when we froze to death almost one day last year collecting names of children eligible for a FREE mug and crown, funds, petition for the mobile library, swimming , shall I go on? No, which by the way answers another of your questions, that all resident children up to

## A WALK DOWN MEMORY LANE

### Rye Harbour Under Fire

Fire watching at the chemicals and No 2 High Street where I worked! Joining the home guard at 17 years of age and losing a hand grenade when on exercise in the allotments, we had to search until we found it. My mum telling a Royal Irish Fusilier recently back from Dunkirk, " If you must fire at German airplanes, don't do it from just outside our front door. There are plenty of other places to do that."

Bombs on eastern end of Rye view, Tram Road, two ladies and a dog killed, six bombs one night, first one in duck pond, second in Jimmy Downey's garden, completely demolishing the bungalow, luckily being of wooden construction it just folded up and the occupants escaped because the furniture held the sections clear of them, the soil from the garden landed mostly in our back yard burying our dog 'Peters' kennel with him inside. Apple trees blown clear over our house and into the main road. The third bomb blew a crater where the bus turns now and the others over the river.

An oil bomb (incendiary) landing in the road by Spuncrute entrance 3 minutes before I got there on my bike on the way home from work, having been delayed to deliver letters to Watchbell Street on the

way home. (How lucky can you get?) Fishing boats shot up in the bay and set on fire, Rye cinema direct hit, Ferry Road school playground machine gunned, a small girl hit, mine fields from Harbour entrance to Winchelsea Beach, soldiers and sheep blown up by accident. Boom of piles across river and fishing boat 'Sussex Maid' coming to grief on them. My Dad and brother having to roll down the railway bank to dodge bullets on the way home from the boat. Watching a pilot bale out during a dogfight overhead taking his flying boots off in case he landed in the sea, in the event he landed safely at the old lifeboat house between a minefield and the high tidemark, a matter of a few yards. Watching one of our own planes shot down by Ack Ack because it couldn't give the recognition signal. I was at home at the time with a B'great boil behind my knee and I stood up at our bedroom window screaming at people, "It's one of ours, It's one of ours!" but nobody took any notice!

It crashed in the castle fields, if I remember it was a Beaufighter returning home disabled, all of us kids were experts on airplane recognition. It paid to be. Quite a lot more but then I went in the army and that's another story.

**By Dan'll (Harbour Duck)**

the age of 16 will receive a free mug and coin if there name is on the register held at 17 Tram Rd. As far as rumours go, who takes any notice of them, it's actions that count and as you say "we all want the same thing". The Skate Pipe is something that came out of a

survey of the children of Rye Harbour as one of the top priorities. Yes money has been collected and controlled and can be verified but the organisers also know when they achieve the amount required, it will have to go to a public meeting for any further decisions.

As far as name and address supplied, I'm sure there were probable very good reasons for not wishing their details revealed. Finally does your Bonus Ball Game reach all at Rye Harbour. If anyone else would like to comment on this or any other matter, please do.



The  
Pugwash Pantry  
and  
Spit Roast Company

for the very best in  
Outside Catering  
contact Dick or Babs on  
tel: 01797 270912  
mobile: 07711 892395

E.mail: dick.cherrytree@virgin.net

# RYE CLEANERS

MARKET ROAD

Tel. 01797 224779

FULLY FINISHED LAUNDRY AND DRY CLEANING  
BAG WASH SERVICE (washing by weight)  
REPAIRS AND ALTERATIONS  
SPECIALIST SUEDE, LEATHER AND WAXED GARMENT CLEANING  
EXPRESS SERVICE AVAILABLE

HARRIS REFRIGERATION

## FRIDGE FREEZER REPAIRS

NO CALL-OUT CHARGE

Rye (01797) 224401 or New Romney 362327  
Mobile 07721-369937

# 1<sup>st</sup> CLASS DRIVING SCHOOL

Rye 01797 225870

RYE, TENTERDEN AND SURROUNDING AREA

Free 1st Lesson and Assessment

K. Avery

Qualified D.O.T., A.D.I.

Vauxhall Corsa

## R. & J. COOPER

Twice weekly London Service — Tuesday/Friday  
DELIVERIES to and from London and Home Counties

### REMOVALS

Full or Part Loads — Local or Long Distance

### HOUSES CLEARED

Unwanted Rubbish, etc.

REGULAR SERVICE TO LOCAL TIP

Telephone RYE 226108/07973 958002 for free estimate

## PATRICK OSBORNE & SONS

N.H.B.C.

### BUILDERS

01797 280213

SMALL WORKS DEPARTMENT

### P. P. O. BUILDERS

Paul and Peter Osborne

Telephone/Fax 01797 222415 01797 230040 07973 742210

www.ppobuilders.org.uk



Ellis Bros.  
(Funeral Services)  
Ltd.



THE OLD FIRE STATION, 3 FERRY ROAD, RYE. Tel 01797 222394

Funerals, Memorial Monuments arranged

Private Chapel of Rest

Golden Charter Prepaid Funeral Plans

Under the Personal Service of Mr. M. J. Howard at any hour



# RASTRUM LTD



*Shipping &  
Warehousing*

Industrial Units  
&  
Office Space  
To Let

Rye Wharf, Harbour Road, Rye,  
East Sussex TN31 7TE

Telephone:  
(01797) 224778  
Fax: (01797) 223650



## RYE & DISTRICT COMMUNITY TRANSPORT

The question was raised this week as to whether Community Transport was here to help only the elderly. The answer is very firmly no. While many of those who are transported by one or other of the buses are elderly, we do provide transport for the young people as well. Here in the village Marcus has organised a group of youngsters to go on the Community Bus to swim at Tenterden each Saturday. The Parent & Toddler Group will be using the same bus for their outing to the Children's Farm in March. We have provided

transport for the Camber Brownies to go to and from camp and regularly take the Camber Youth Group on outings which have included the cinema at Ash ford and the laser maze in Eastbourne. We take children from Tilling Green Infants School on their annual outings to Bixlea Woods and Camber Sands and during half term the Northiam After School Club went over to the De La Warr Pavilion on the Community Bus. Each school day we transport children from Northiam to and from Homewood

School in Tenterden. And Animate is looking at the need for transport home for those who live outside Rye using one of the Community Transport buses. As you can see, Community Transport is here for all ages - on the Dial-a-Ride one of the most regular users is a young man whose mobility is limited by cerebral palsy. He (and his wheelchair) are taken from his home in Northiam each Friday evening to and from Brede where he plays short mat bowls.

Pat Hughes

### **WHAT DO YOUNG PEOPLE GET UP TO THESE DAYS ?**

***Just look at what they can get up to***

SAILING - CANOEING - MOTOR BOATS with RYA and BCU QUALIFICATIONS - OFFSHORE YACHTS - MOTOR VESSELS and the SQUARE RIGGER 'ROYALIST'

Instruction :

Seamanship - Engineering - Clerical Work - Fieldcraft  
Duke of Edinburgh's Award Scheme

## **RYE SEA CADETS**

ROCK CHANNEL, RYE — Telephone 01797 224720

Mondays and Fridays 7 - 9 p.m. Boys and Girls 12 - 18 years  
Junior Section : Mondays only — Boys and Girls 10 - 12 years



# COUNTRY PINE WAREHOUSE

*40 The Mint, Rye,*

*East Sussex*

*TN31 7EN*

*01797 224572 shop*

*01797 225014 Warehouse*

TIME . TEMPS . ZEIT . TIME . TEMPO . TIME . TIJD . TIME . TIEMPO . TIME . TEMPS

**CLOCK and WATCH SERVICES and REPAIRS**

Prompt Service    Personal attention    Home visits

## Passage of Time

Jason C. Jordan, Horologist

**WORLDWIDE CUSTOMER BASE      FREE ESTIMATES**

The Gallery  
Needles Passage, Rye  
East Sussex TN31 7EN

(U.K. 0044)  
Tel : 01797 227355  
Mobile : 07803 817577

TIME . TEMPS . ZEIT . TIME . TEMPO . TIME . TIJD . TIME . TIEMPO . TIME . TEMPS

## CALENDAR CLEANING

**Tel: 01797 - 230736      Mobile: 07798 - 674942**

**Commercial & Residential Cleaners**

### OFFICES - SHOPS - WINDOWS - CARPETS - HOUSES

Throughout Rother & the Wealden Area

**Fully Insured    Trained Staff    Free Quotations**

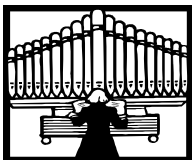
## Martyn Channon's COUNTRY STORE

**RYE CATTLE MARKET - RYE - EAST SUSSEX**

**(01797) 224232    Fax (01797) 224560**

ANIMAL HEALTH PRODUCTS - FENCING WIRE - GATES  
ANIMAL and PET FOOD - COUNTRY CLOTHING - CARTRIDGES  
SHEARING EQUIPMENT - IRONMONGERY

**Open 8.30 - 5.30, Saturday 9.00 - 5.00      Delivery Service**



## Rye Harbour Church News

The most important festival of the Christian year is Easter Sunday. That is the day when we celebrate the resurrection of Jesus Christ from the dead. That basic Christian belief makes a great difference to how lives are lived. For now they have

a purpose beyond this present and passing limited span of human existence.

So why not come and join us on Easter Sunday, 31 st this year, at Rye Harbour Church? The service is at 9.15am and all will be most welcome.

**Martin Sheppard**

Sunday 10th March. Parish artists will be held over the maintenance of £150.00  
Eucharist 9.15am Easter period. Please see per annum at Rye Harbour  
Easter Sunday 31st March posters for details, it and Iklesham, has been cut  
Eucharist of Easter 9.15am promises to be interesting. Further details in the next  
Finally we learn that grant issue.  
An art exhibition by local aid towards the churchyard

### Monday Luncheon Club

Sylvia Alford and helpers held another Ploughman's Lunch on Monday, Poppy and Georgina helped with the raffle.



All our friends came down from Rye, quite a few of them now and they are very welcome.

**Nanny Pat**

### MESSAGE FROM PAT TO PAT

Just to reaffirm what Pat Hughes said about "Dial a ride" I can only say that I had a lovely day a couple of weeks ago. We went to Famborough in Kent, to see two friends of ours and then over to Coulsdon in Surrey to see " Mad John's" new house and I am sure a lot of you will remember him.

Tracy is a super driver and jolly good company.

**Nanny Pat**

## RYE HIRE

1 CYPRUS PLACE, RYE — Tel. 01797 223033

### New Equipment for Hire

MUCK TRUCK PETROL ENGINED BARROW from £25 + vat

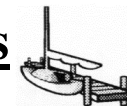
BOMAG PETROL ROLLER from £40 + vat

CAMON PETROL TURF CUTTER from £27.50 + vat

We still hire a wide range of equipment, self building materials, cycle spares, etc. and repair/service most makes of tools and garden equipment

Member of Hire Association Europe

## Rye Harbour Sailing Club News



The sailing club was formed in the thirties by Rye Harbour and Rye sailors. Ken Rooke's brother and Gerry Blattman were founder members.

We are a friendly Club who already have quite a number of village people as members. You do not have to own a boat, just an interest in the sea and people.

There are two sections in the club, one for dinghy sailors and one for cruiser sailors. The club own three tappers, a wanderer, a merlin all suitable for new sailors, young and old.

The club is a teaching establishment giving courses up to day skipper and yacht master standards, instruction in

VHF and VHF SRC Communication, engine maintenance and first aid.

We also have a fund to give grants towards the cost of courses for young people. Partial costs can also be met to sail on training ships, what better experience than to sail before the mast on a tail ship.

This year began on 1st January 2002 with a Rum Race for dinghies, we have social evenings on Thursdays, recently one consisted of a Bum's Supper.

I as membership secretary would welcome new applications. Please contact me on (01797) 224351 for details.

**Ken Halpin**

## Rye Harbour Parent and Toddler Group



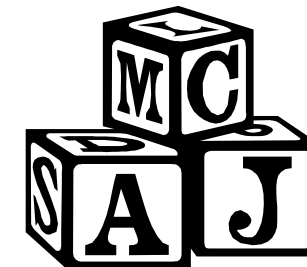
Hello again,  
Parent and Toddler are still

going strong, a warm welcome to our new mums and toddlers who have recently joined our group. Sadly we will be losing 2 of our children (Alfie and Charlotte), as they will be going off to Nursery next week, so good luck.

Don't forget our Easter fun at the Farm, where we will

have an Easter egg hunt.

**Julie Cleary**



## Animate Parent & Child Group

Landgate, Rye

01797225006

Tuesday's 10.30am - 12.30pm

For Ages 0-5 Yrs

Cost Per Session £1.25

Includes Tea\Coffee & Biscuits

Come Along & Have A Good Time





## Family Announcements

### Congratulations

We all had a lovely time at JeffRobus 50th Birthday party at the Conk, all his friends were there and there were a lot of them. We all had our photo taken by Mike



### GET WELL SOON

Pat Hartley is home from hospital in Crowborough, having had a knee operation. We missed her help in the kitchen at the ploughman's; hope to see her out soon.



Poor Dave Piggott is still unable to ride his bike up to chicken farm; he fell over indoors over one of his dog's toys and landed on his knee, which had recently been operated on. Hope it won't be long Dave before your mobile again.

Olive Taylor went into her garden to pick up a chair which had blown over and she slipped on the wet grass and broke her wrist, hope it will mend soon Olive.

Vera Lancaster has had lots of trouble with her bad knee, she's had lots of pain and discomfort and we hope that soon it will be better.

Reports were written By Nanny Pat

## **WILLIAMS BROS.**

### **GREENGROCERS AND FRUITERERS**

Teleflorist      *Sweet Williams Florist*      Teleflorist

44 - 46 CINQUE PORTS STREET, RYE

Florist 226941

Fax 222219



## Family Announcements

### BIRTHDAYS

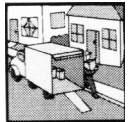


This is a picture of our very popular Postie "Margaret"; we couldn't print it before, because we wanted it to be a surprise.



Happy 13th Birthday To Nick Payne, on the 28th February Love from Mum, Dad, Chris and Tom Xxx

### MOVING



We hope it's not too late to welcome Chip and Willow to Tram rd, not forgetting Jake the dog, they seem to have settled in very well and no doubt we will see more of them when the weather improves.

Ann and Terry Satchell have moved to their new house now, we hope the move wasn't too stressful; it's not a very nice job, even when everything goes smoothly.

Good luck to Gary Haffenden in his move too. We send him all our best wishes and hope to see him when he comes back to the harbour on visits. Also many happy returns of his 40th birthday.

We welcome Kath and Jeanette to the village, they have just moved down from London to Coastguard Square. They will soon settle in and make new friends I'm sure, and join in some of our village activities.



*Don't forget to keep sending me  
details of your Birthday's  
Photos are returned*